



Real Estate
Brokerage

COMMERCIAL

Office/Industrial Property

149 Cardevco Rd., Ottawa, ON



Asking Price:	\$10.65 psf	Operating Costs:	\$3.40 psf
Building Size:	4,239 sq. ft.	Site Area:	0.51 Acres
Space Available:	1,412 sq. ft.	Year Built:	Old
Tenancy:	Single	Zoning:	RG4
Loading:	1 overhead door	Parking:	Ample
Ceilings:	18 feet	Power:	200 amps

One storey concrete building with approximately 382 square feet of office space constructed in 2002. Storage mezzanine included. One overhead door. Building height is 18 feet. Possibility for expansion of an additional 1,000 square feet.

Michael Simon

Sales Representative

613-722-6004 x 279

mike.simon@clvgroup.com

www.clvgroup.com

Information furnished regarding these properties is from sources deemed reliable but no warranty or representation is made as to the accuracy thereof. The same is submitted to errors, omissions, change of price or other conditions, prior to sale or lease, or withdrawal without notice.

FOR LEASE

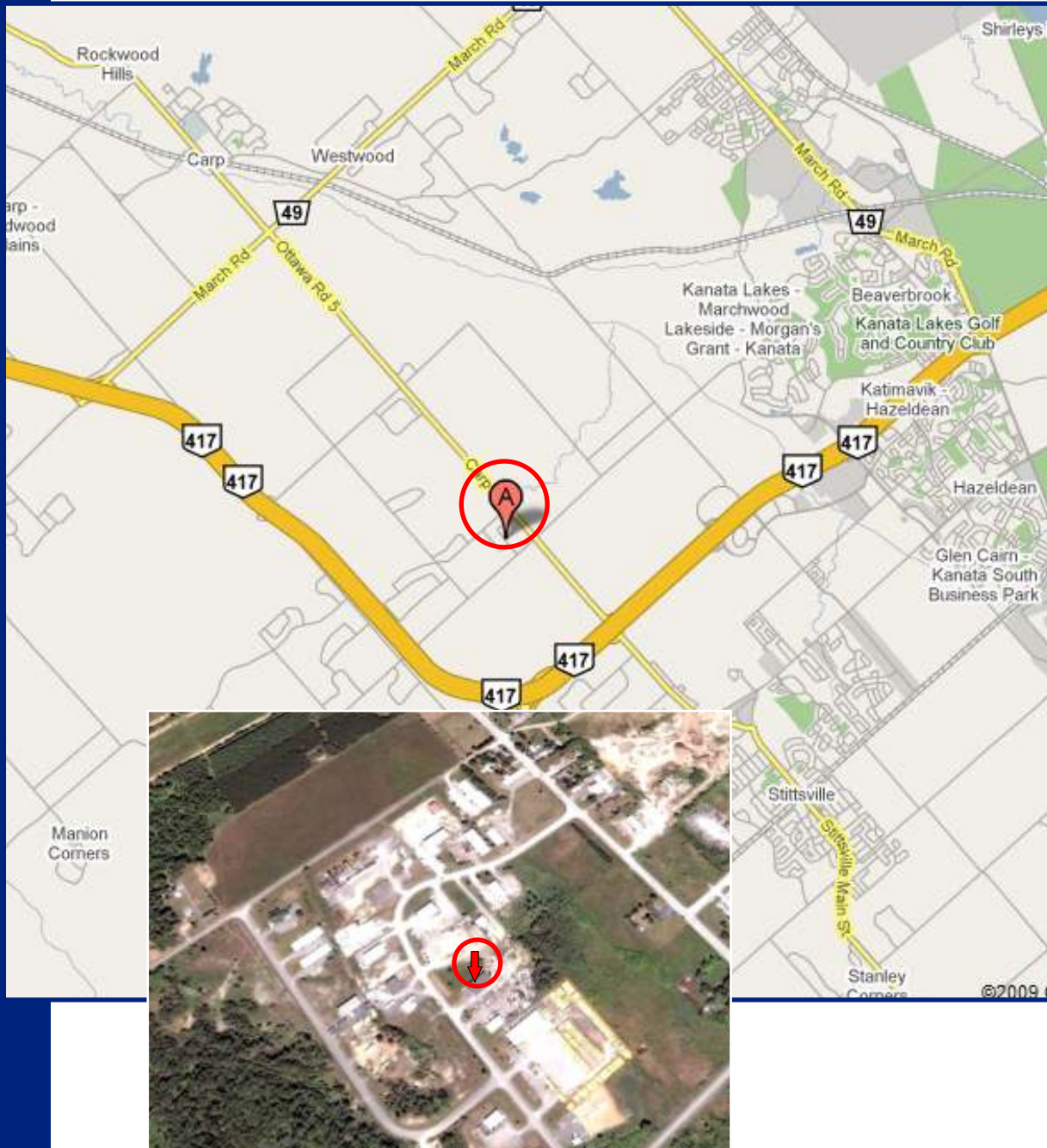


Real Estate
Brokerage

COMMERCIAL

AERIAL PHOTOGRAPH AND MAP

FOR LEASE



www.clvgroup.com

Information furnished regarding these properties is from sources deemed reliable but no warranty or representation is made as to the accuracy thereof. The same is submitted to errors, omissions, change of price or other conditions, prior to sale or lease, or withdrawal without notice.

